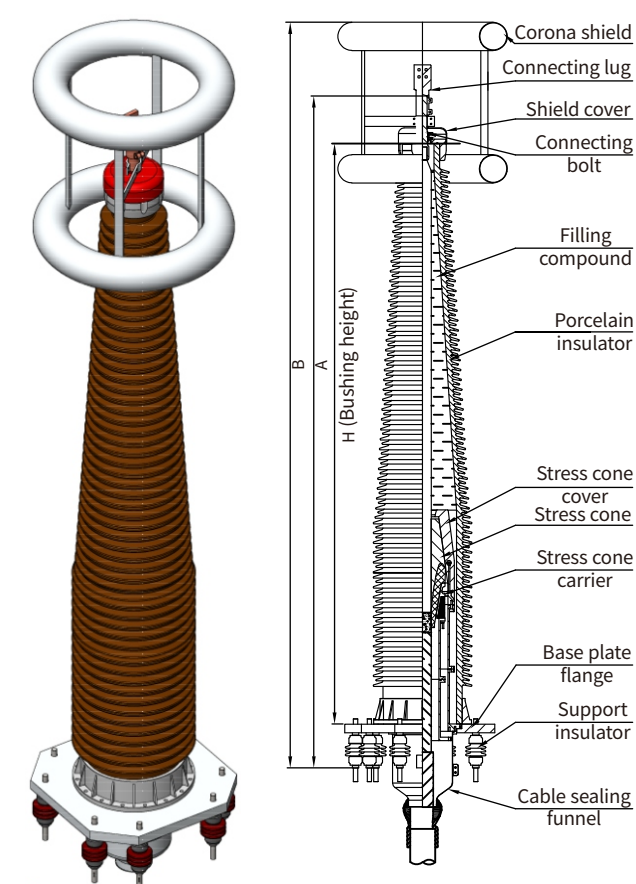


362kV-550kV Outdoor Porcelain Termination



Type/Applications:

WYJZWY4: Meet with requirements of pollution class IV
Max. system voltage: 362kV, applicable to 800 ~2500mm²
Max. system voltage: 550kV, applicable to 800 ~2500mm²

Features:

- 1. Stress cone is injection-molded by excellent EPDM rubber. Secured by the spring cone carrier, our stress cone is designed with a stress cone cover so as to be isolated from insulated agent (avoiding poor contact between stress cone and cable outer semi-conductive layer or elastic relaxation due to stress cone ageing) ensures excellent electrical property.
- 2. Multi-layer sealing construction avoids water or oil leakage during operation and prolongs service life of termination.
- 3. Rain sheds of various sizes on terminations well prevent pollution flashover.
- 4. Porcelain insulator, made of high strength inorganic material, demonstrates good performance in weather resistance, anti-tracking nature, arc-erosion resistance as well as hydrophobicity.
- 5. Type tested according to IEC 62067, GB/T 22078.

Cable Lug Palm Specification of Composite Termination

Voltage rating	Cable nominal cross-section	Lug hole distance C(mm)	Connecting hole of lug Q(mm)	Palm width of cable lug D(mm)	Palm length of cable lug L (mm)
362kV	800mm ²	45	14	80	113
	1000-1600 mm ²	50	17	100	133
	2000-2500 mm ²	50	18	125	162.5
550kV	800 mm ²	45	14	80	113
	1000-1600 mm ²	50	17	100	133
	2000-2500 mm ²	50	18	125	162.5

Outline Dimension

Max. system voltage	H(mm)	A(mm)	B(mm)
362 kV	4100±10	4715±20	5116±50
550 kV	5400±10	6045±20	6416±50

Notice When Ordering:

- 1. Cable configuration and the cross-sectional area of earth wire shall be submitted when ordering.
- 2. Feel free to contact our sales manager before ordering if you have any special requirements.

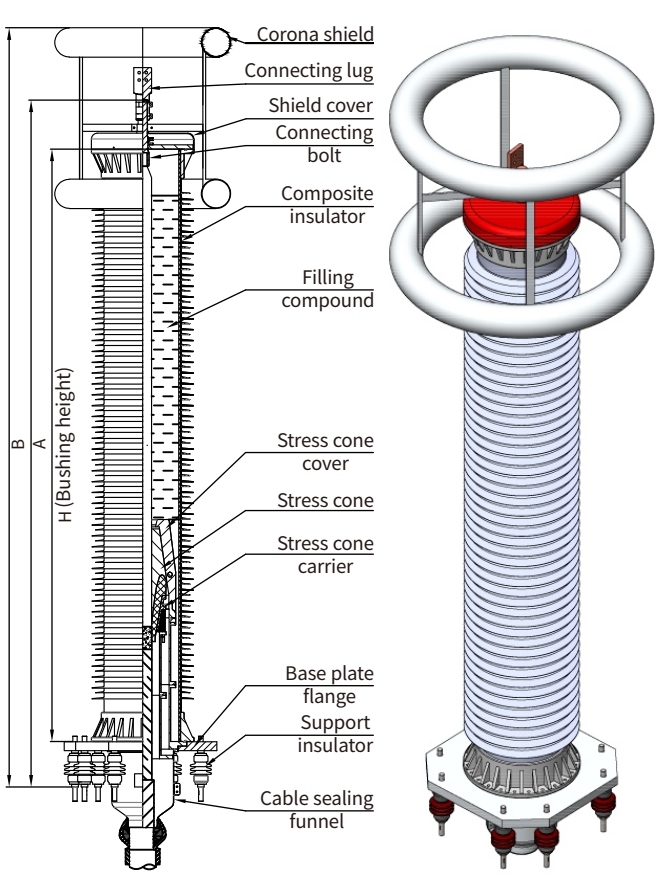
362kV-550kV Outdoor Composite Termination

Type/Applications:

WYJZWFY4: Meet with requirements of pollution class IV
Max. system voltage: 362kV, applicable to 800 ~2500mm²
Max. system voltage: 550kV, applicable to 800 ~2500mm²

Features:

- 1. Stress cone is injection-molded by excellent EPDM rubber. Secured by the spring cone carrier, our stress cone is designed with a stress cone cover so as to be isolated from insulated agent (avoiding poor contact between stress cone and cable outer semi-conductive layer or elastic relaxation due to stress cone ageing) ensures excellent electrical property.
- 2. Multi-layer sealing construction avoids water or oil leakage during operation and prolongs service life of termination.
- 3. Rain sheds of various sizes on terminations well prevent pollution flashover.
- 4. Outer insulation made of silicone rubber, outstanding in properties of anti-pollution flashover, anti-UV, anti-aging and anti-explosion while it weighs only 1/2 of porcelain termination at equivalent voltage level provides a more convenient installation.
- 5. Type tested according to IEC 62067, GB/T 22078.



Cable Lug Palm Specification of Composite Termination

Voltage Rating	Cable nominal cross-section	Lug hole distance C(mm)	Connecting hole of lug Q(mm)	Palm width of cable lug D(mm)	Palm length of cable lug L (mm)
362kV	800mm ²	45	14	80	113
	1000-1600 mm ²	50	17	100	133
	2000-2500 mm ²	50	18	125	162.5
550kV	800 mm ²	45	14	80	113
	1000-1600 mm ²	50	17	100	133
	2000-2500 mm ²	50	18	125	162.5

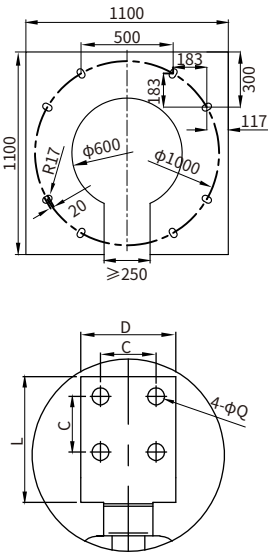
Outline Dimension

Max. system voltage	H(mm)	A(mm)	B(mm)
362 kV	4038±10	4583±20	4944±50
550 kV	5380±10	5295±20	6286±50

Notice When Ordering:

- 1. Cable configuration and the cross-sectional area of earth wire shall be submitted when ordering.
- 2. Feel free to contact our sales manager before ordering if you have any special requirements.

Base Plate Mounting Dimension



Base Plate Mounting Dimension

