

## WCAB

### Cold Applied Insulation Boot

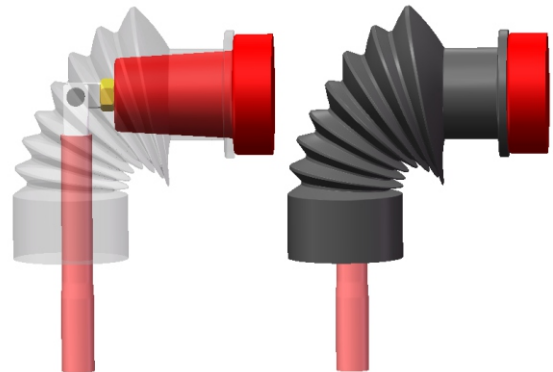
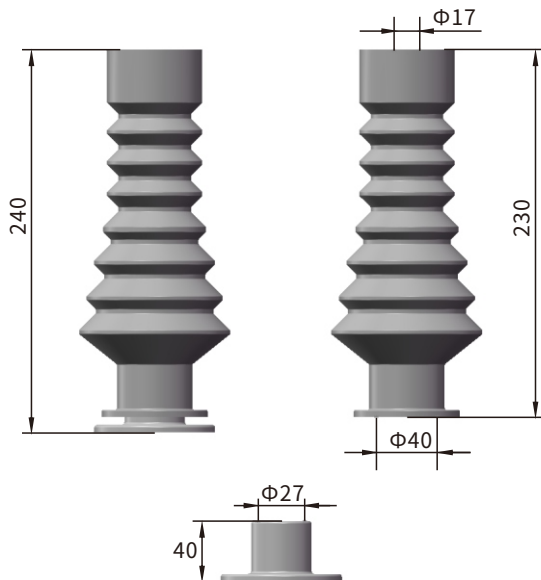


#### Description

Woer elastomeric insulating boots are molded parts which fit over the connection between the cable lug and the inline or right-angled bushing to improve phase-to-phase and phase-to-ground insulation. They are used in switchgears and transformers where the clearances are insufficient for normal operation, or to protect against flashover rodents or high humidity.

#### Features

- Made of silicone rubber.
- Collar is optional for use where the bushing size is smaller.
- Offering tailor-made solutions against specific requirements (size, color).
- Connection can be energized immediately after installation.
- Excellent tracking and erosion resistance.
- Removable and re-installable.
- Fast and simple installation.
- Unlimited shelf life.



#### Technical Data

Maximum System Voltage	17.5kV
Basic Impulse Level	95kV
Collar Size	27mm
Bushing Diameter	31-45mm
Bushing Types	250A/630A
Cable Cross Section	35-400mm <sup>2</sup>