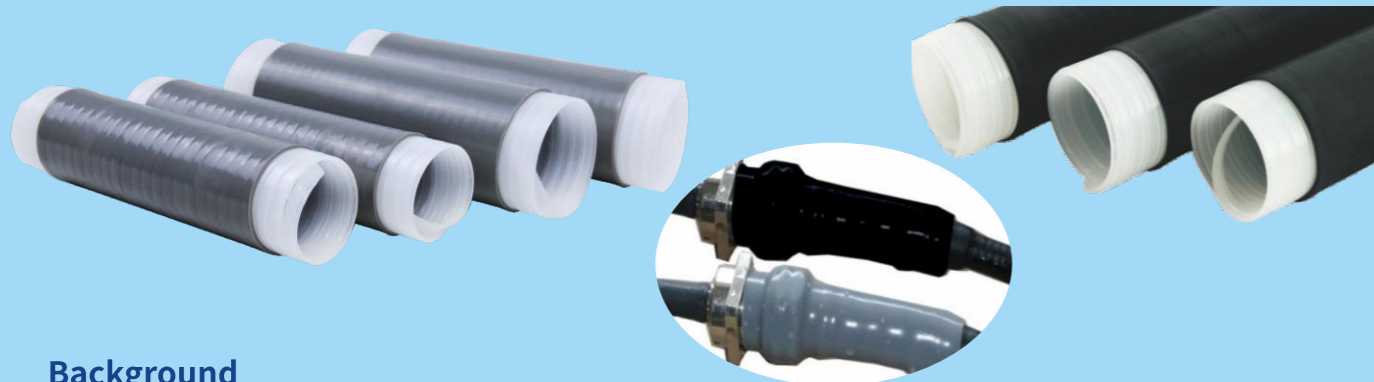


WOER Weather-proof Solutions in Wireless Telecom. Station







Background

Moisture and water is the enemy of coax and the whole communication system. They can intrude into coaxial cable through connectors and cause damage. They can attenuate the high frequency RF signal, resulting in a service outage. In telecommunication field, even a short service interruption can result in a large loss.

Application



Current solutions and comparisons

Solutions	Tapes or mastics	Gel closure	Heat shrink tube	Cold shrink tube
Comparisons				
Weather proof	Good	Better	Better	Excellent
Room	Common	Large	Small	Small
Labor cost	High	Low	Low	Low
Tools	No	No	Heat gun	No
Maintainance	Difficult to remove	Convenient	Difficult to remove	Convenient

Cold Shrink Tube

Product Introduction

Woer cold shrink tubes made of silicone rubber are a series of open ends, tubular rubber sleeves, which are manufactory expanded and assembled onto a removable supporting plastic core.



Product Features

- Simple installation;
- No tools or heating required;
- Tightly sealing, resilience retainability even after years of aging and exposure;
- Waterproof which can meet requirements of Ip67;
- Convenient installation for limited site.

Product Advantages

- Time saving so that it can save the most labor cost
Less than 1 minute
- Meet the design requirement of compact RRU;
Less than 10mm between the two connector central lines
- Just cut for routine check;
Less than 5 seconds

Installation Instruction



Cold Shrink Silicone Tube

Technical Parameters

No.	Property	Typical value	Test method
1	Tensilestrength	≥7.5MPa	GB/T528
2	Tear strength	30kN/m	GB/T529
3	Elongation	700%	GB/T528
4	Volume resistivity	1.0*10 ¹⁵ Ω·cm	GB/T1410



Selection table

Cold Shrink Tube of Gray Silicone Rubber

Part No.	Size	Application Range (mm/inch)	Length after Relaxed(mm/inch)
625-L	Φ25	6.3~21/0.25~0.59	90~180/3.5~7
632-L	Φ32	10~26/0.39~1.02	90~180/3.5~7
635-L	Φ35	12~30/0.47~1.18	90~180/3.5~7
640-L	Φ40	12.7~33/0.50~1.30	90~450/3.5~17.7
644-L	Φ44	12.7~38/0.50~1.50	90~450/3.5~17.7
653-L	Φ53	22~46/0.87~1.81	90~500/3.5~19.7
665-L	Φ65	32~58/1.26~2.28	90~500/3.5~19.7
680-L	Φ80	37~72/1.46~28.3	90~500/3.5~19.7

Cold Shrink Tube of Black Silicone Rubber

Part No.	Size	Application Range (mm/inch)	Length after Relaxed(mm/inch)
825-L	Φ25	7.3~21/0.29~0.83	81.3~203/3.2~8
835-L	Φ35	10.5~30/0.42~1.18	178~305/7~12
840-L	Φ40	11.9~34/0.47~1.34	140~305/5.5~12
845-L	Φ45	13.5~39/0.53~.54	152~305/6~12
853-L	Φ53	18.2~45/0.72~1.77	152~457/6~18
870-L	Φ70	22.4~63/0.88~2.48	125~508/5~20

Cold Shrink EPDM Tube

Technical Parameters

No.	Property	Typical value	Test method
1	Tensilestrength	≥8.0MPa	GB/T528
2	Tear strength	30kN/m	GB/T529
3	Elongation	700%	GB/T528
4	Volume resistivity	1.0*10 ¹⁵ Ω·cm	GB/T1410



Selection table

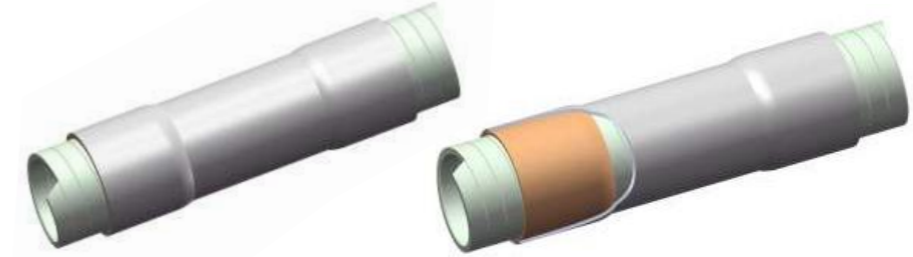
Cold Shrink Tube of General EPDM

Part No.	Size	Application Range (mm/inch)	Length after Relaxed(mm/inch)
8320-6	Φ20	8~15/0.30~0.59	152/6
8325-L	Φ25	10~20/0.39~0.79	203~280/8~11
8335-L	Φ35	14~30/0.55~1.18	229~280/9~11
8340-L	Φ40	17.5~33/0.69~1.30	152~457/6~18
8353-L	Φ53	25~46/0.98~1.81	152~457/6~18
8370-L	Φ70	32~63/1.26~2.48	152~457/6~18
8104-9	Φ104	43~94/1.69~3.70	229/9
8125-9	Φ125	46~114/1.81~4.49	229/9
8150-18	Φ150	55~135/2.17~5.31	457/18

Cold Shrink Tube of High Shrinkage Ratio EPDM

Part No.	Size	Application Range (mm/inch)	Length after Relaxed(mm/inch)
8435-L	Φ35	12.5~30/0.49~1.18	229~279/9~11
8440-L	Φ40	14~33/0.55~1.30	152~406/6~16
8453-L	Φ53	19~46/0.75~1.81	152~457/6~18
8460-10	Φ60	20.5~51/0.81~2.01	254/10
8470-L	Φ70	25~63/0.98~2.48	152~457/6~18
8480-13	Φ80	27.4~70/1.08~2.75	325/13

Cold Shrink Silicone Rubber Tube with Mastic



Product Introduction

Pre-applied sealing mastic with excellent sealing effect. No need of wrapping sealing mastic tape or sealing mastic to make the installation more simply and quickly.

Selection table

Part No.	Size	Application Range(mm/inch)	Length after Relaxed(mm/inch)
728-L	Φ28	9~23/0.36~0.90	100~120/3.94~4.72
732-100	Φ32	9~26/0.36~1.02	100/3.94
744-135	Φ44	12.7~38/0.5~1.49	135/5.31

Cold Shrink Silicone Rubber Tube with Padding



Product Introduction

Woer cold shrink tubes with padding are a series of open ends, tubular rubber sleeves, which are manufactory expanded and assembled onto a removable supporting plastic core. Meanwhile, the new design adopts a padding structure in one end for better tear strength.

Selection table

Part No.	Size	Application Range(mm/inch)	Length after Relaxed(mm/inch)
624-L	Φ40	12.7~33/0.50~1.30	90~450/3.5~17.7

Embossing Cold Shrink Silicone Rubber Tube



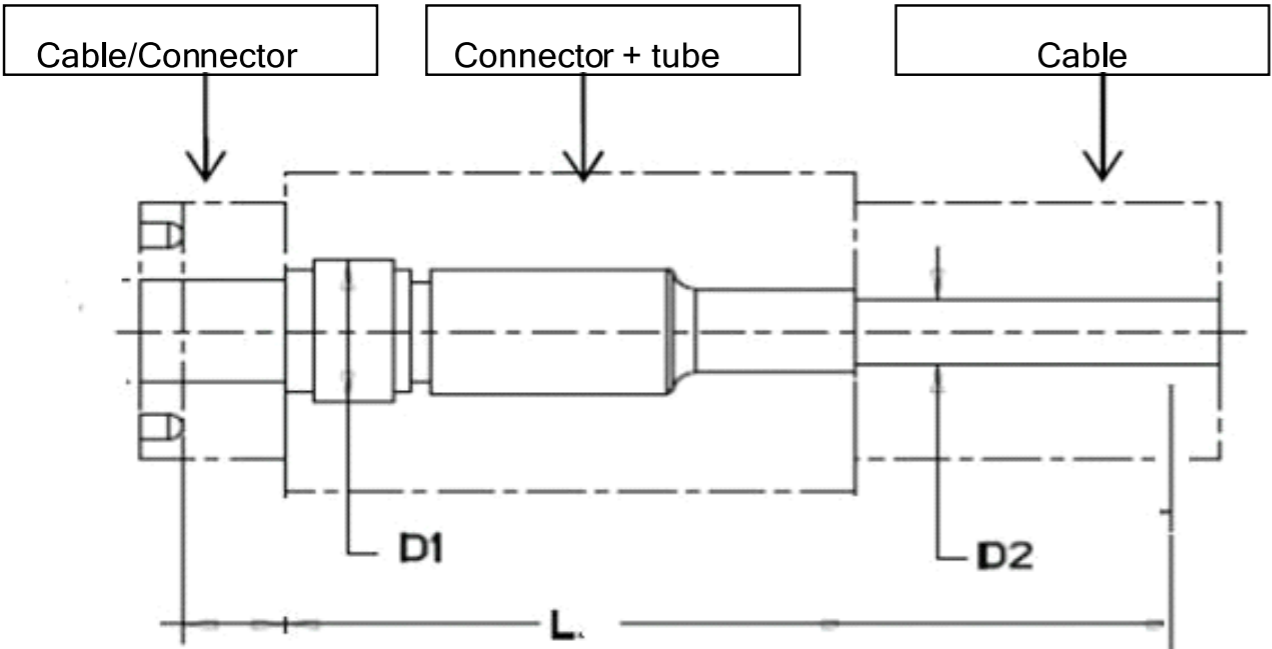
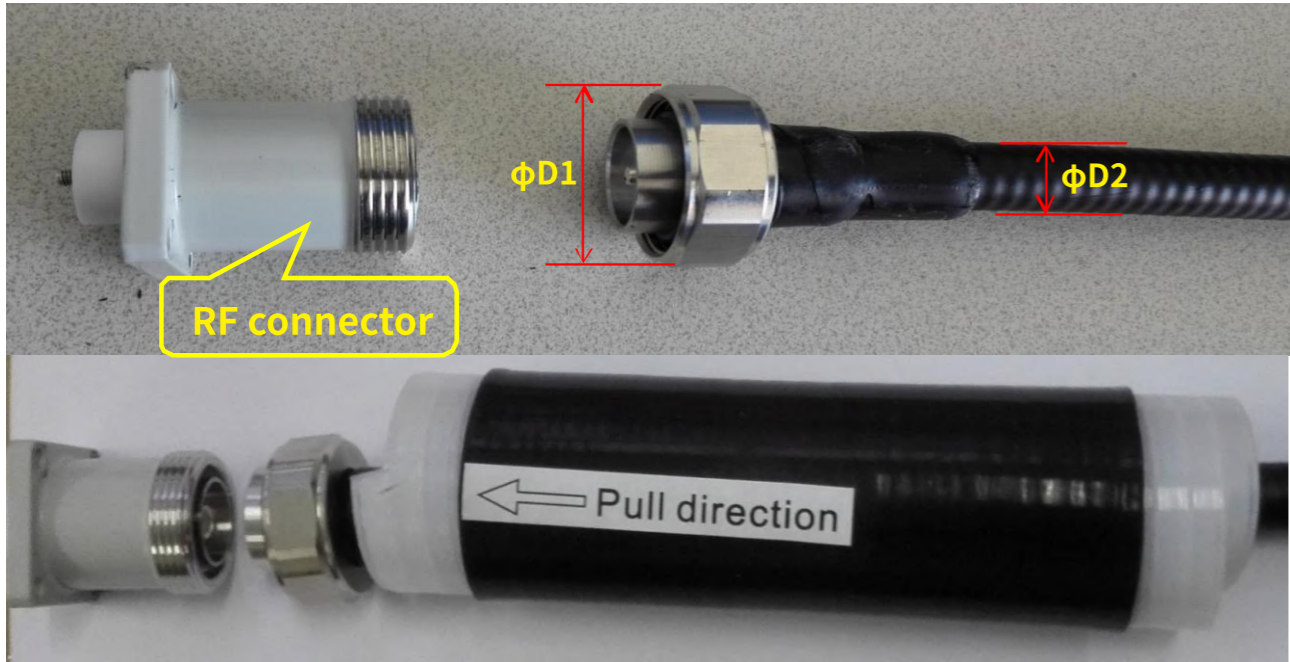
Product Introduction

Woer embossing cold shrink tubes are a series of open ends sleeves, tubular rubber sleeves, which are manufactory expanded and assembled onto a removable supporting plastic core. Meanwhile, the new design adopts a corrugated structure to provide better protection against impact and friction.

Selection table

Part No.	Size	Application Range(mm/inch)	Length after Relaxed(mm/inch)
640-L	Φ40	12.7~33/0.50~1.30	90~450/3.5~17.7

Dimensions required



Just fill the followed table

	Length for seal (L)	Connector OD(D1)	Cable OD(D2)
Dimension(mm)			

Typical specifications recommended

Woer Part No.	Application Range	Length for seal (L)	Connector OD(D1)	Cable OD(D2)
644-135	12.7~38	135	Type N (34/37)	22.2
632-110	10~26	110	Type N (24)	12.7
640-135	12.7~33	135	DIN-7/16 (32)	12.7
653-135	22~46	135	DIN-7/16 (40)	22

(mm)

Test Report

