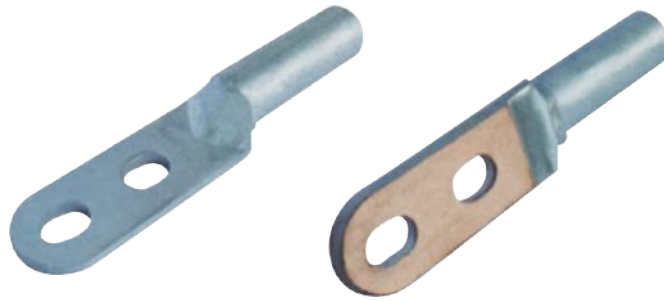


# DTLSQ Series Braze Welding Cu-AL Lug



## Application

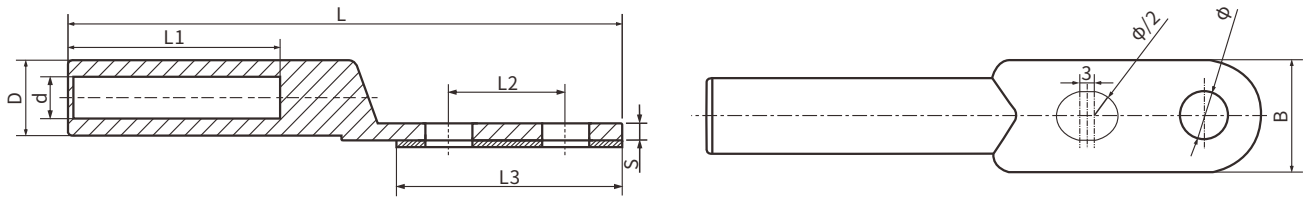
Double bolt hole connection to enhance connection and to avoid displacement. DTLSQ series braze welding Cu-AL lug is applicable to connection between electrical aluminum cable terminations and equipments in power distribution up to 35kV.

It is made of aluminum lug braze welded with copper plate under the lug palm, which demonstrates good conductivity and solid bonding.

## Material

Aluminum: 1060 Copper: T2

## Specification



Product Model	D	d	L	Φ	L1	L3	B	L2	S
DTLSQ-35	14	8.6	101	10.5	40	46	23	25	4
DTLSQ-50	16	9.8	113	10.5	42	46	23	25	4.5
DTLSQ-70	18	12.4	128	12.5	47	57	28	30	5.2
DTLSQ-95	21	13.4	128	12.5	50	57	28	30	5.6
DTLSQ-120	23	15.4	146	14.5	53	67	34	30	6.4
DTLSQ-150	25	16.4	153	14.5	55	67	34	30	7.4
DTLSQ-185	27	18.5	161	14.5	58	77	40	35	7.4
DTLSQ-240	30	20.5	169	14.5	60	77	40	35	8
DTLSQ-300	34	23.5	189	16.5	65	86	45	40	9.5
DTLSQ-400	38	26.5	200	16.5	73	86	52	40	10